

Tehama County Sheriff's Office

2014-2015 Biyearly Report



Dave Hencratt
Sheriff-Coroner

Serving our Community with "P.R.I.D.E."
Professionalism, Respect, Integrity, Dedication, Equality.

Table of Contents

Message from Sheriff Hencratt.....	Page 3
Tehama Alert.....	Page 4
Dispatch Upgrade	Page 5
Black Creek Jail Management System	Page 6
Ducor Repeater—RTR.....	Page 7
Auto Shop	Page 8
Crime Analysis Statistics	Page 9—10
Fun Photos	Page 11

A Message from Sheriff Hencratt



I have been Sheriff for the past five years. Our employees are as professional, dedicated and motivated to keep our community safe, as any other department in the country. I am very proud of them. It is an honor to be a member of this great organization.

I am a strong supporter of the 2nd Amendment. I will continue to support the rights of law abiding citizens to possess firearms.

We have dealt with prisoner realignment as well as any other organizations in the state and will continue to respond in a proactive manner with California's ever changing laws and mandates, as a result of realignment, which ultimately affects local government and our local citizenry.

We are looking forward to an addition to our jail, which will be funded with monies awarded to our County by the State. The addition will consist of sixty four beds, new kitchen, laundry, medical treatment room and office, as well as additional space needed for inmate programs.

We continue to find ways to spend and stretch our tax dollars in the most efficient way possible, without sacrificing the safety of our employees or our citizens.

I am very proud of what we have accomplished in the last five years and I look forward to working alongside the members of the Tehama County Sheriff's Office in the future.

Sincerely,

A handwritten signature in blue ink, appearing to read "DL" followed by a long horizontal stroke.

Dave Hencratt
Sheriff-Coroner

Tehama Alert

The Tehama County Sheriff's Office, Red Bluff Police Department and Corning Police Department intend to use Tehama Alert (also known as TENS, Tehama Emergency Notification System, and Reverse 9-1-1) to notify citizens of a potential fire, gas leak, flood or other natural or man-caused incident in your local area that would prompt an immediate evacuation or shelter in place protocols. In most of these instances, sufficient information should be provided for you to act upon.

Tehama Alert may also be used to broadcast information regarding lost or missing children/adults, or wanted and potentially dangerous people. A photo can actually be attached to the message. In these cases follow the instructions contained in the notification closely. The message will likely advise you to call 911 immediately if you make observations that will help police. This is an appropriate use of the 911 system and your assistance in this matter may directly impact public safety and will be greatly appreciated.

Help us help you by signing up today and sharing this with friends. The service is free to the public.

To get alerted about emergencies sign up for **TEHAMA ALERT** at:

<https://member.everbridge.net/index/892807736723620#/signup>

This system enables us to provide you with critical information quickly in a variety of situations, such as severe weather, unexpected road closures, missing persons and evacuations of buildings or neighborhoods.

The program, which was purchased with funding received from Homeland Security, currently has 22,330 Tehama County citizens registered for alerts.

TCSO Dispatch Upgrade

The upgrade to the Tehama County Sheriff's Office Dispatch and 911 Call Center was approximately a two year project.

The center, which was moved to a vacant space down the hall from its previous location, opened on September 30, 2015.

The total cost of the program was \$501,436.30. The majority which was covered through various grants including \$347,122.21 received from the Customer Premise Equipment (CPE) 911 grant; Emergency Management Preparedness Grant of \$39,498; and the county's general fund in the amount of \$114,816.09.



In addition to the new flooring, lights, and electrical, "4" new dispatch consoles and radios were installed, which included new monitors, a recording system from Eventide to capture calls (REDBOX) and new CAD equipment and A.T. & T. as a vendor.

The department had a significant amount of savings by utilizing the department's maintenance department, who was able to

remodel the majority of the room, at a savings of about \$100,000. The cabinets were built by the AB-109 woodworking program supervised by Mike Shaffer.

The new center currently has "4" dispatch consoles, but is able to hold up to "7" if needed in the future.



Jail Management System

SallyPort®

JAIL MANAGEMENT SYSTEM



SallyPort is the first inmate records management system designed specifically for county jails. SallyPort was designed by Black Creek Integrated Systems out of Alabama.

The Tehama County Jail went live with the program in January of 2015.

This program is a huge improvement over the previous Jail Management System mainly due to the ability to customize certain aspects of the program to fit our specific needs.

Ducor Repeater - RTR



To increase the operability of radio functions throughout the county, a new repeater was purchased and installed in the Rancho Tehama Reserve area of Tehama County in 2014 with funds received from Homeland Security.



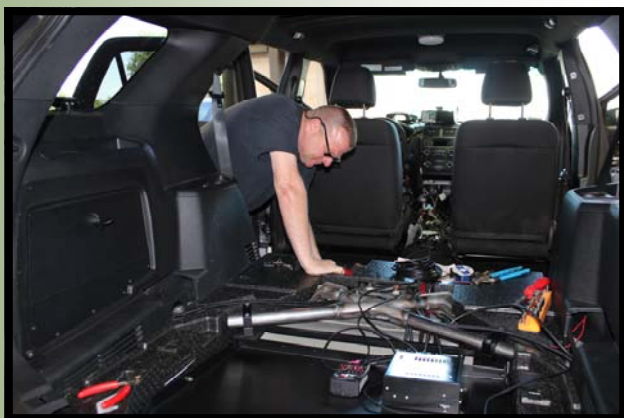
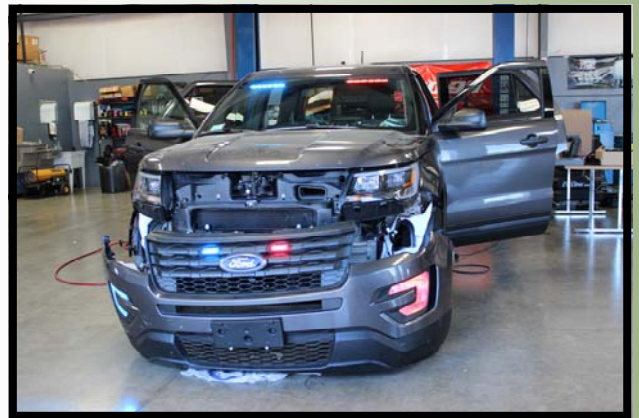
Auto Shop



The Tehama County Sheriff's Office opened the Auto Shop in July of 2012 as an alternative to incarceration that could also provide marketable work force skills.

The shop is run by a deputy with 15 years of experience as a licensed journeyman mechanic and two assistants.

At any given time up to nine work release inmates provide up to 200 hours of labor per week servicing county vehicles, building new vehicles, fixing transmissions, changing oil, rotating tires and detailing patrol cars.



To date the Tehama County Sheriff's Office Auto Shop Crew has built 32 public safety vehicles (including 5 for the DA's Office, 8 for the Probation Department, 2 for the Public Guardian's Office and 18 for the Sheriff's Office saving the county approximately \$160,000.

Crime Analysis Statistics

ABOUT INDEX CRIMES

Since 1930, the FBI has collected and compiled data to use in understanding and improving law enforcement administration, operations and management; and to indicate fluctuations in the level of crime in America. The crimes selected for data by the FBI are the four most serious violent crimes (offenses against the person) and the four most serious property crimes. The Tehama County Sheriff's Office reports these eight index crimes to the California Department of Justice on an annual basis, who, in turn, forwards the information to the FBI.

VIOLENT CRIMES

MURDER ~ The willful killing of a person, or causing the death of a person through a criminal act.

CRIMINAL SEXUAL ASSAULT ~ Broader than the traditional definition of "rape", this category includes any sexual assault, aggravated or non-aggravated, committed against any victim, female or male.

ROBBERY ~ The taking of, or attempted taking of anything of value from the care or custody of a person; through the use of force or fear.

AGGRAVATED ASSAULT/BATTERY ~ The intentional causing of serious bodily harm, or assault with the intent of causing serious bodily harm; to include aggravated assault, assault with a deadly weapon, and attempted murder.

PROPERTY CRIMES

BURGLARY ~ The entry of a structure with the intent of committing a theft or a felony.

THEFT ~ The unlawful taking of property without the use of force, violence or fraud.

MOTOR VEHICLE THEFT ~ The unlawful taking of a motor vehicle.*

ARSON ~ The willful or malicious burning of any building, motor vehicle, aircraft, or property of another.**

* Motor Vehicle Thefts in the Tehama County Sheriff's jurisdiction are investigated by the California Highway Patrol, unless the vehicle was stolen during the commission of a burglary

** Arson cases in the Tehama County Sheriff's jurisdiction are investigated by the California Department of Forestry and Fire Protection, or by the State Fire Marshall.

Crime Stats 2011 ~ 2015

	<u>2011</u>	<u>2012</u>	<u>2013</u>	<u>2014</u>	<u>2015</u>
Murder	1	3	1	5	5
Rape	5	5	7	3	5
Robbery	8	7	3	11	1
Assault	225	212	170	137	179
Burglary	134	133	99	120	173
Theft	182	169	175	101	75
Vehicle Theft	0	1	0	0	2

